

City of Versailles

Request for Qualifications

Sidewalk Connectivity

The City of Versailles is seeking the services of a professional engineering firm to assist with design and construction of a pedestrian connection from Falling Springs Boulevard to the Woodford County Park.

PROJECT DESCRIPTION

The City of Versailles and Woodford County wish to provide a safe route for pedestrians and bicyclists from the multi-use path on Falling Springs Boulevard to the county park. See attached schematic. Path width will be determined during project planning.

SCOPE OF WORK

The City is seeking assistance with the following tasks:

1. Project Planning
 - Prepare a preliminary route plan and an opinion of probable cost
 - Determine number and sizes of drainage structures needed.
2. Project Design
 - Prepare KYTC encroachment permit application.
 - Prepare construction documents for bidding.
3. Project Construction
 - Be available during construction to answer any design questions that may arise.

DELIVERABLES

1. Preliminary route plan.
2. Opinion of probable cost.
3. KYTC encroachment permit.
4. Plans and specifications for bidding.

Property and topographic surveying is not required for this project. City mapping, including topography, parcel lines (reference only), water, sewer and storm utilities, is available for use. Limited surveying may be required for drainage structures and ADA compliance.

SCHEDULE

Issuance of RFP	August 20, 2025
Qualification Submittal Due	September 9, 2025
Selection Committee Meeting	September 11, 2025
Selection of Consultant	September 16, 2025 (council meeting)
Fee Negotiations	September 23, 2025*
Kickoff Meeting	September 30, 2025*
Advertise for bid	December 1, 2025*

* These dates are tentative.

FEE

The city will negotiate a lump sum fee with the selected consultant for the deliverables listed above. Additional tasks may be assigned and fees likewise negotiated. Do not include a fee proposal.

SUBMITTAL

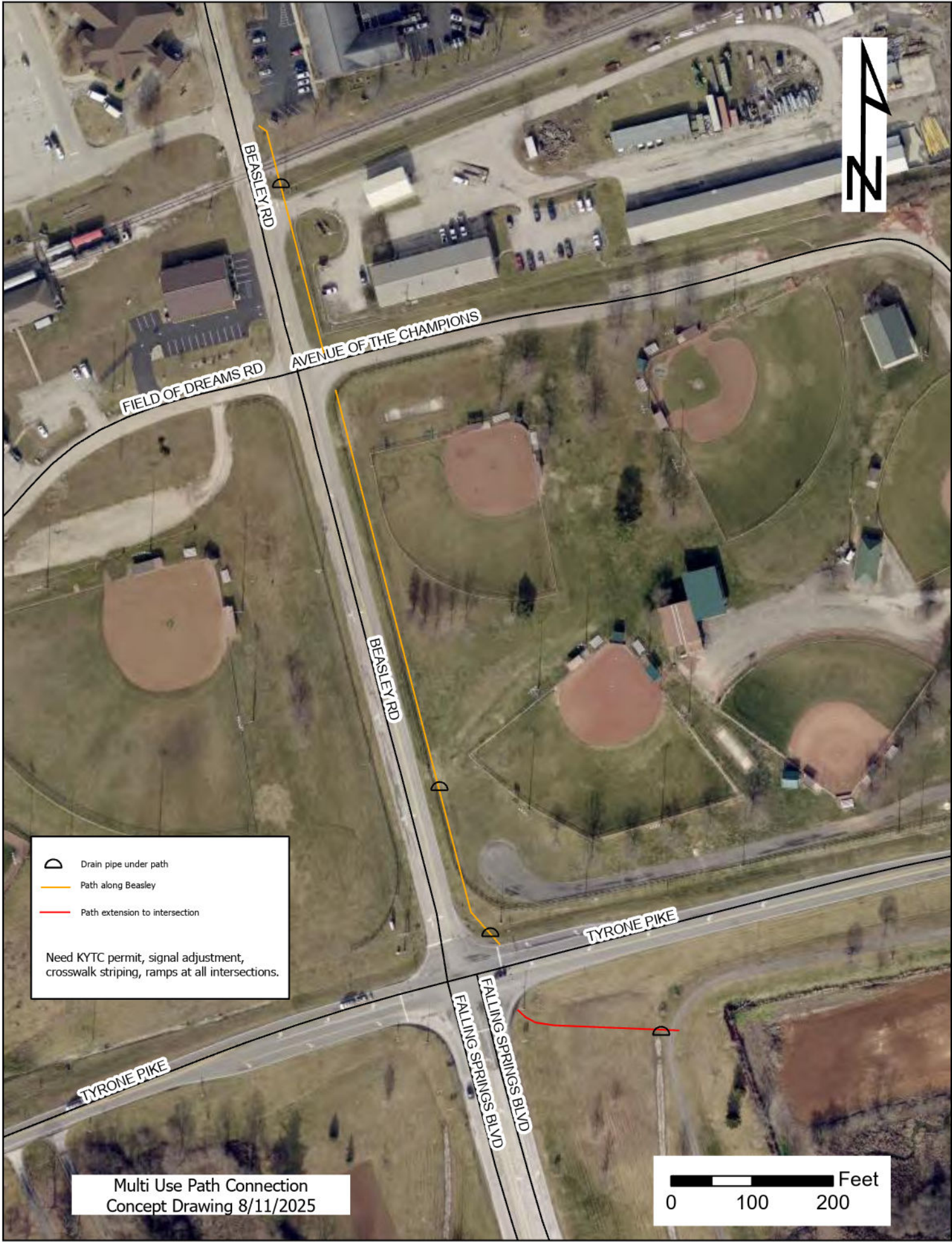
Please submit your qualifications to the City of Versailles, attention Mary Beth Robson, no later than noon, September 9, 2025.

Qualifications packages should include the following (with score weight in parentheses):

1. Project familiarity and innovative ideas. (30%)
2. Project team including any subcontractors. Include resumes of key personnel, indicating KYTC pre-qualifications, if any. (30%)
3. Similar experience with multi-use paths and intersection crossings with references. (20%)
4. Demonstration of capacity and commitment to meet the anticipated schedule. (20%)

Submittals will be scored by a selection committee appointed by the Mayor of Versailles.

If you have questions, please contact Mary Beth Robson at mrobson@versaillesky.com or Dan Knight at dknight@versaillesky.com.



⤿ Drain pipe under path

— Path along Beasley

— Path extension to intersection

Need KYTC permit, signal adjustment,
crosswalk striping, ramps at all intersections.

TYRONE PIKE

AVENUE OF THE CHAMPIONS

BEASLEY RD

BEASLEY RD

TYRONE PIKE

FALLING SPRINGS BLVD

Multi Use Path Connection
Concept Drawing 8/11/2025

